

TRADITIONAL PUPPETS OF **INDIA**

Prepared By: SAMPA GHOSH

INDUS VALLEY TOY



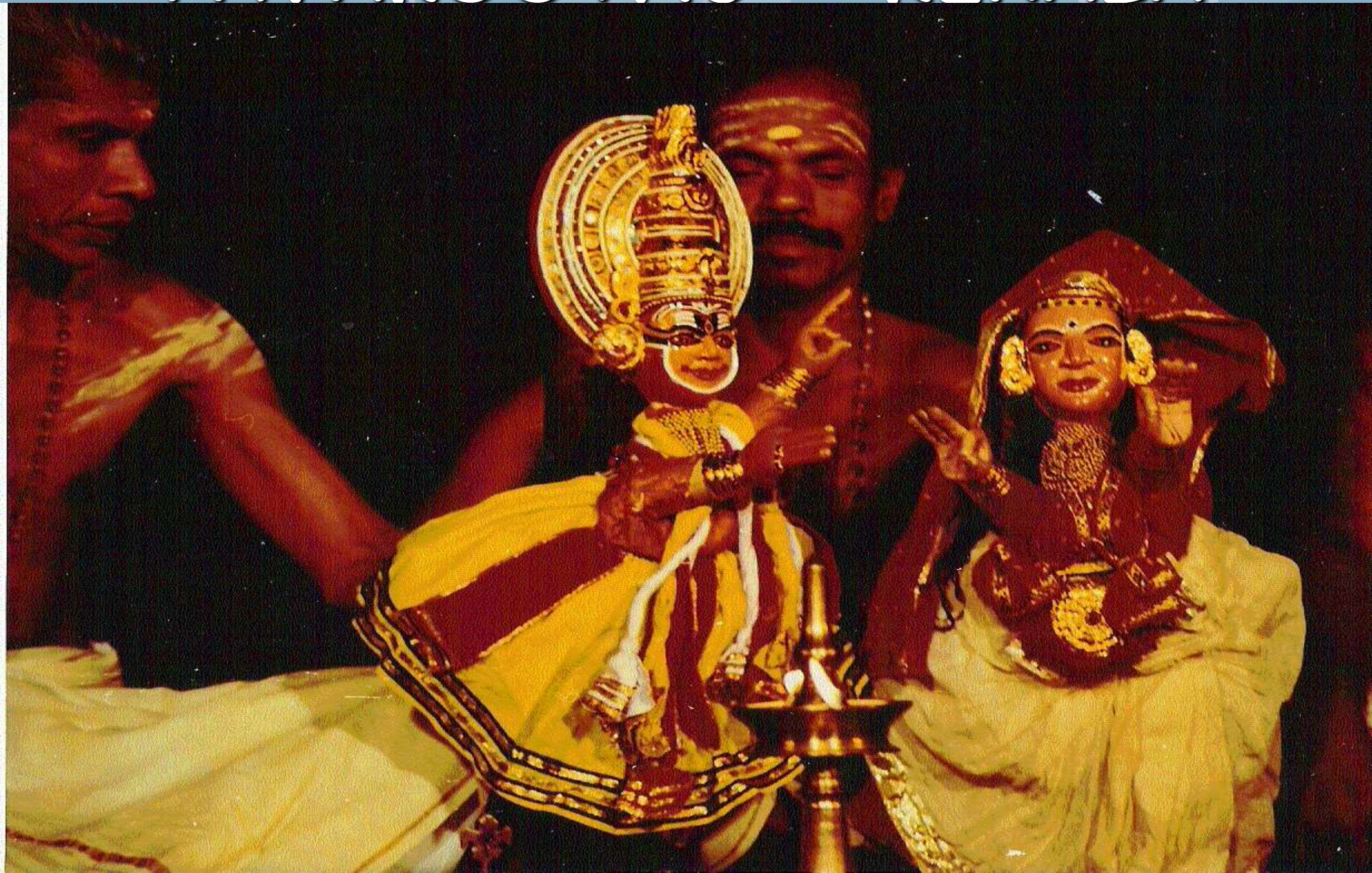
INDIGENOUS TOY



The background features a light blue gradient with several large, stylized leaves in various shades of blue and purple. The leaves have prominent veins and are arranged in a scattered pattern across the frame.

GLOVE PUPPETS

PAVAKOOTHU - KERALA



BENER PUTUL - WEST BENGAL



SAKHI KUNDHEI - ODISHA



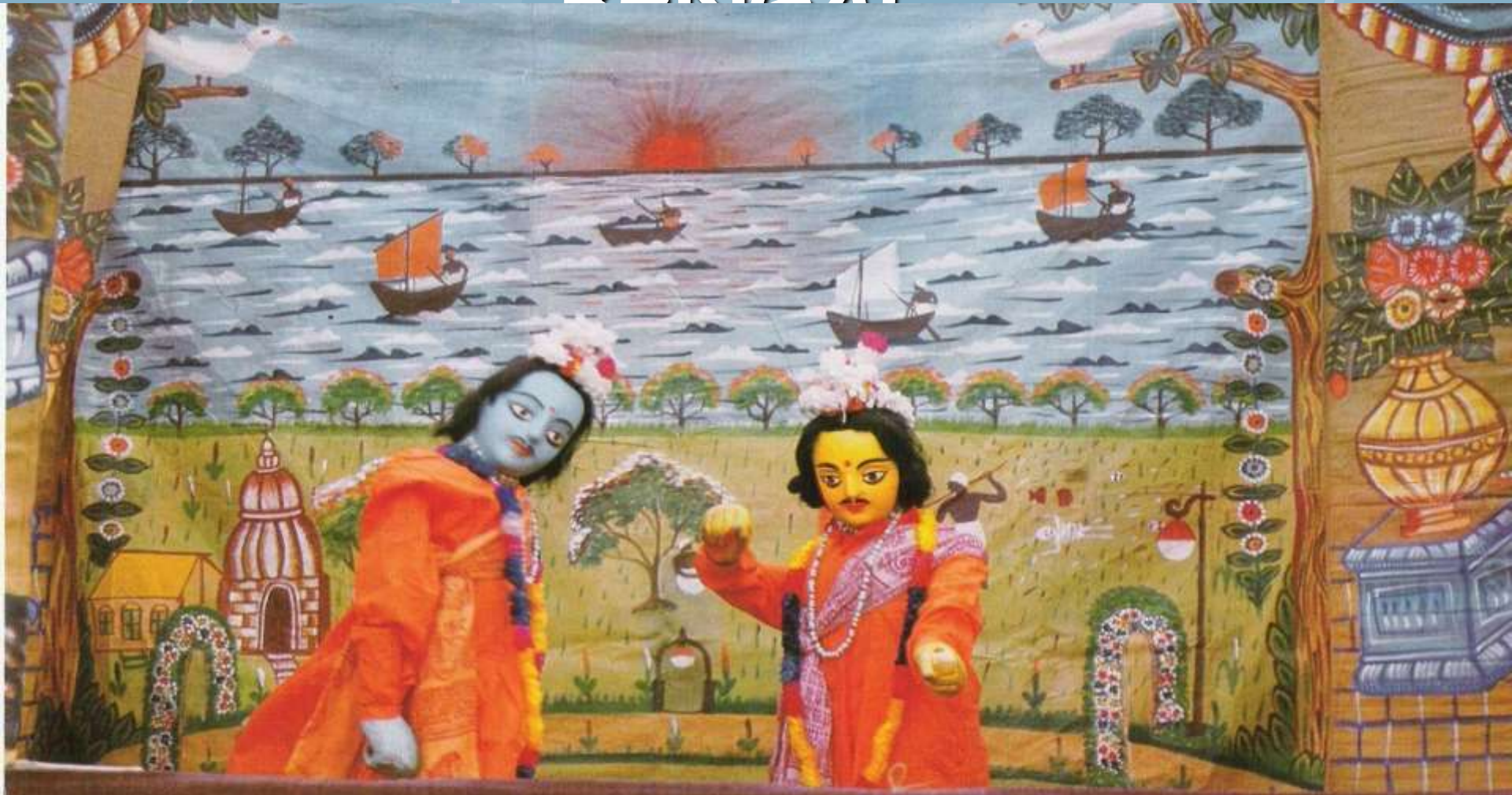
GULABO SITABO - UTTAR PRADESH



The background features a light blue gradient with several stylized, darker blue leaf shapes scattered across it. The leaves have prominent veins and are rendered in a flat, graphic style.

ROD PUPPETS

PUTUL NACH - WEST BENGAL



MANIPULATION OF PUPPET



KATHI KUNDHEI - ODISHA



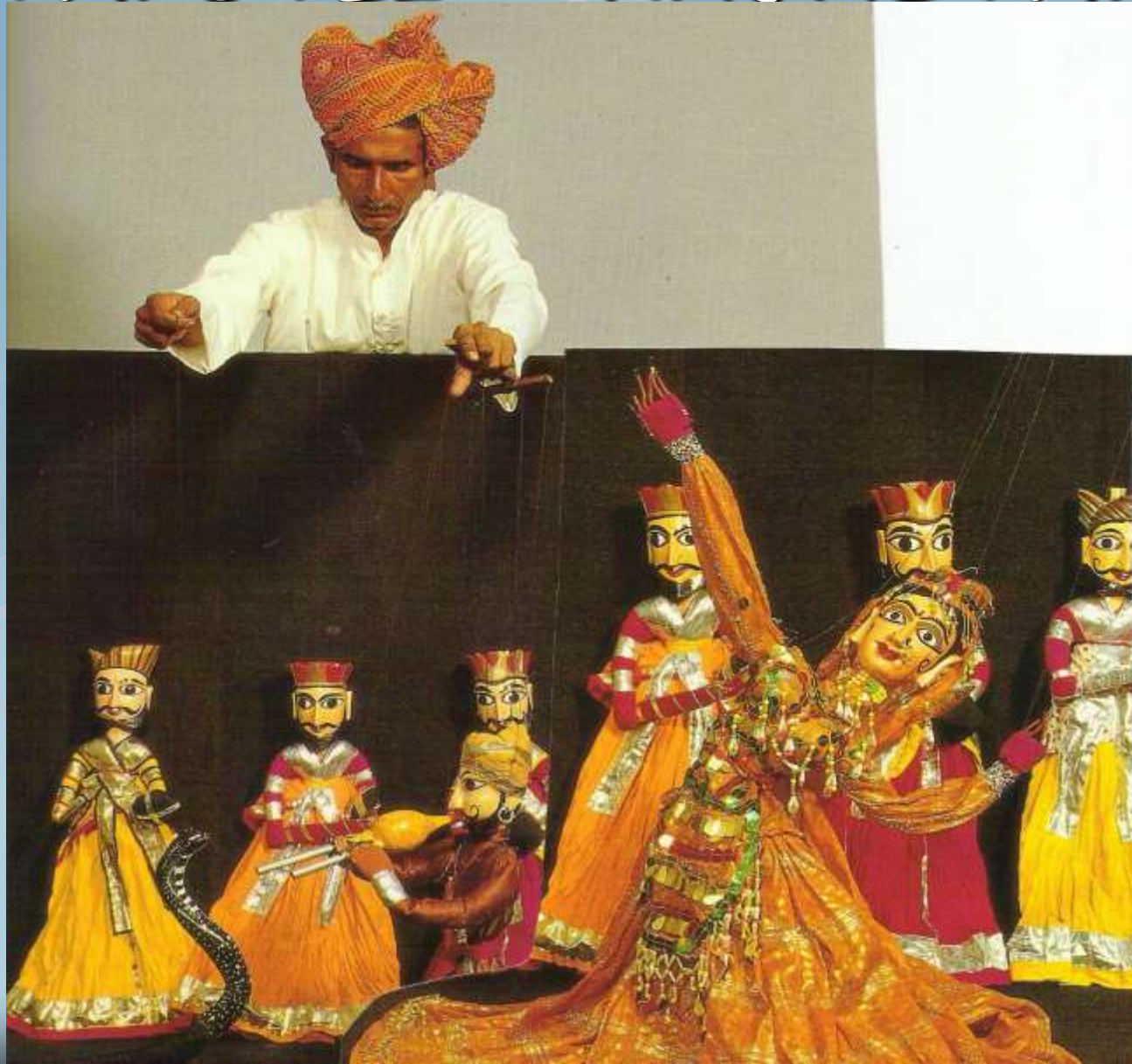
YAMPURI - BIHAR



The background of the image features a repeating pattern of stylized, light blue leaves with prominent veins, set against a slightly darker blue gradient background. The leaves are arranged in a way that creates a sense of depth and texture.

STRING PUPPETS

KATHPUTLI - RAJASTHAN



KALASUTRI BAHULIYA - MALLAPACHUDA



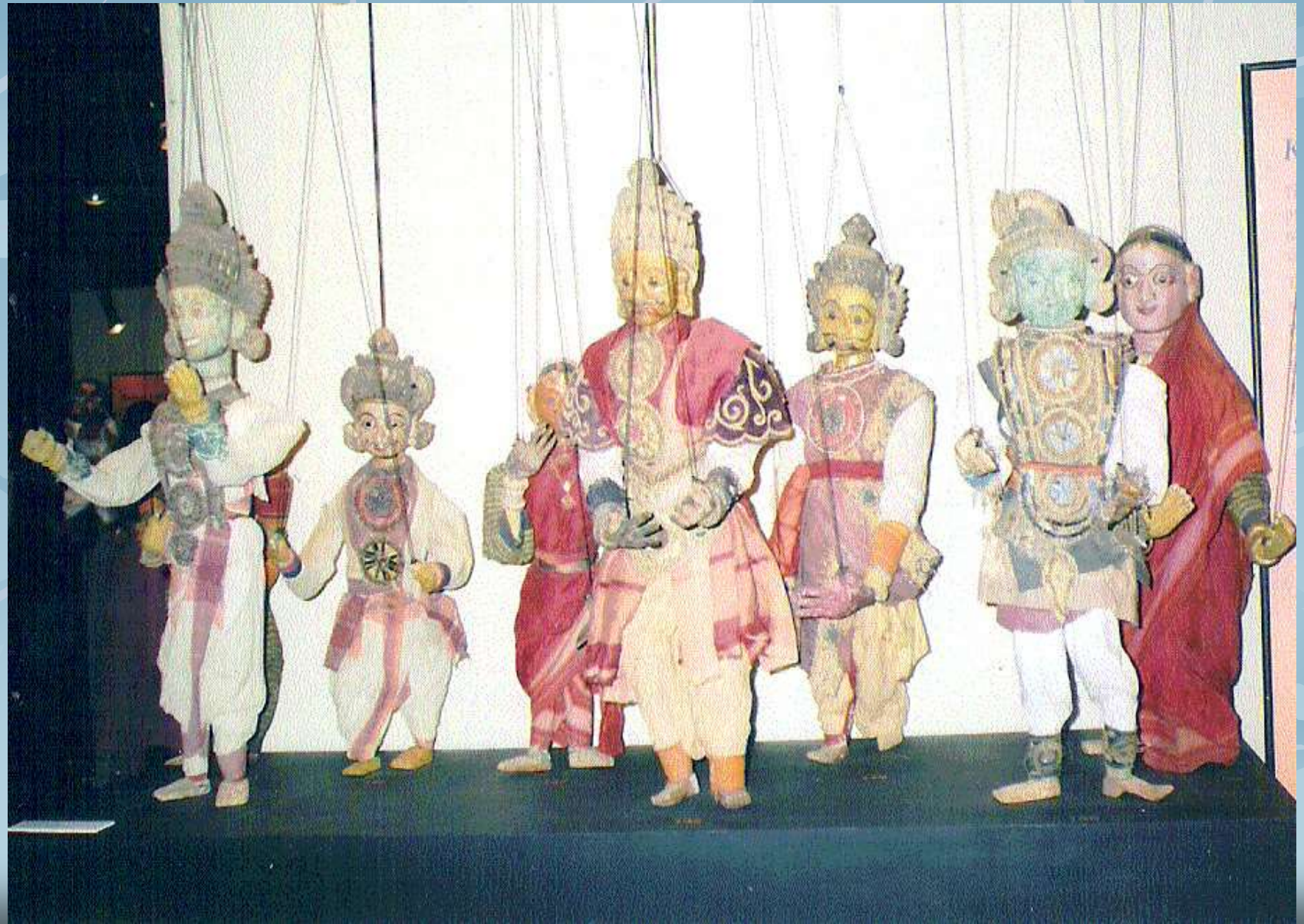
GOMBEATTA - KARNATAKA



MANIPULATION OF PUPPETS



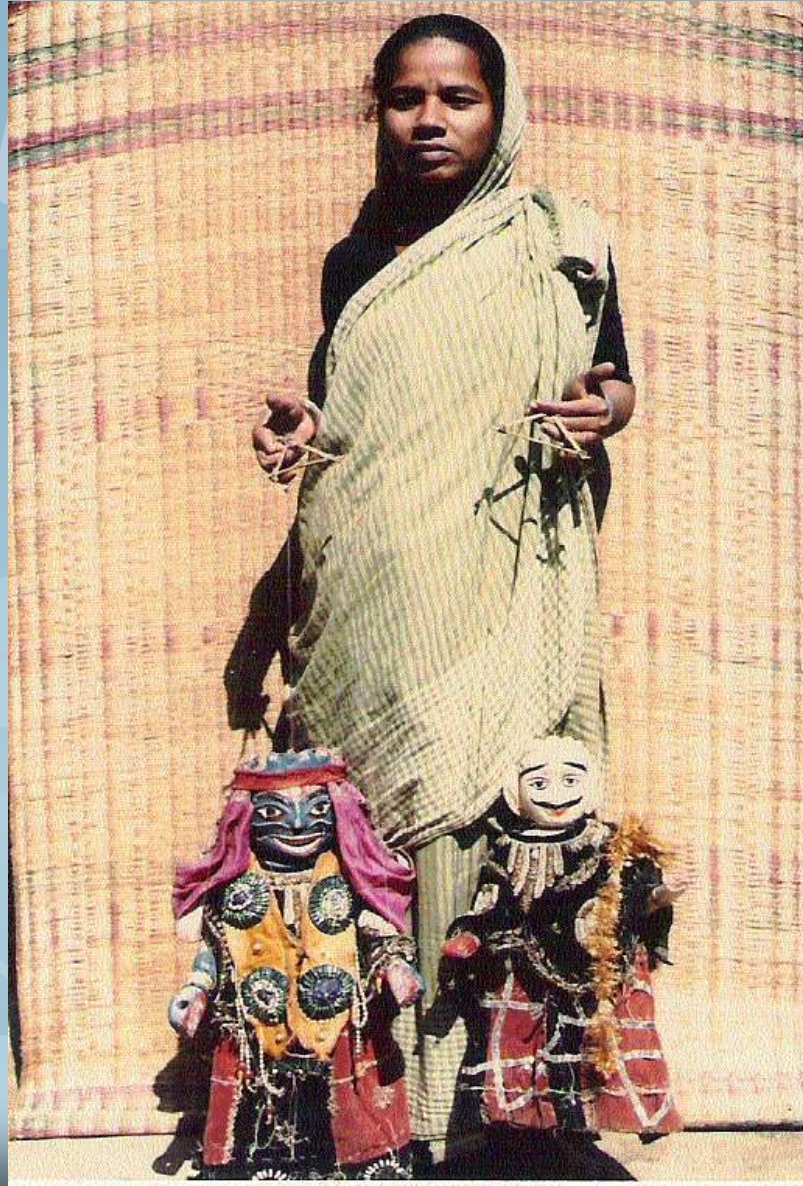
KOYYA BOMMALATA - A. P.



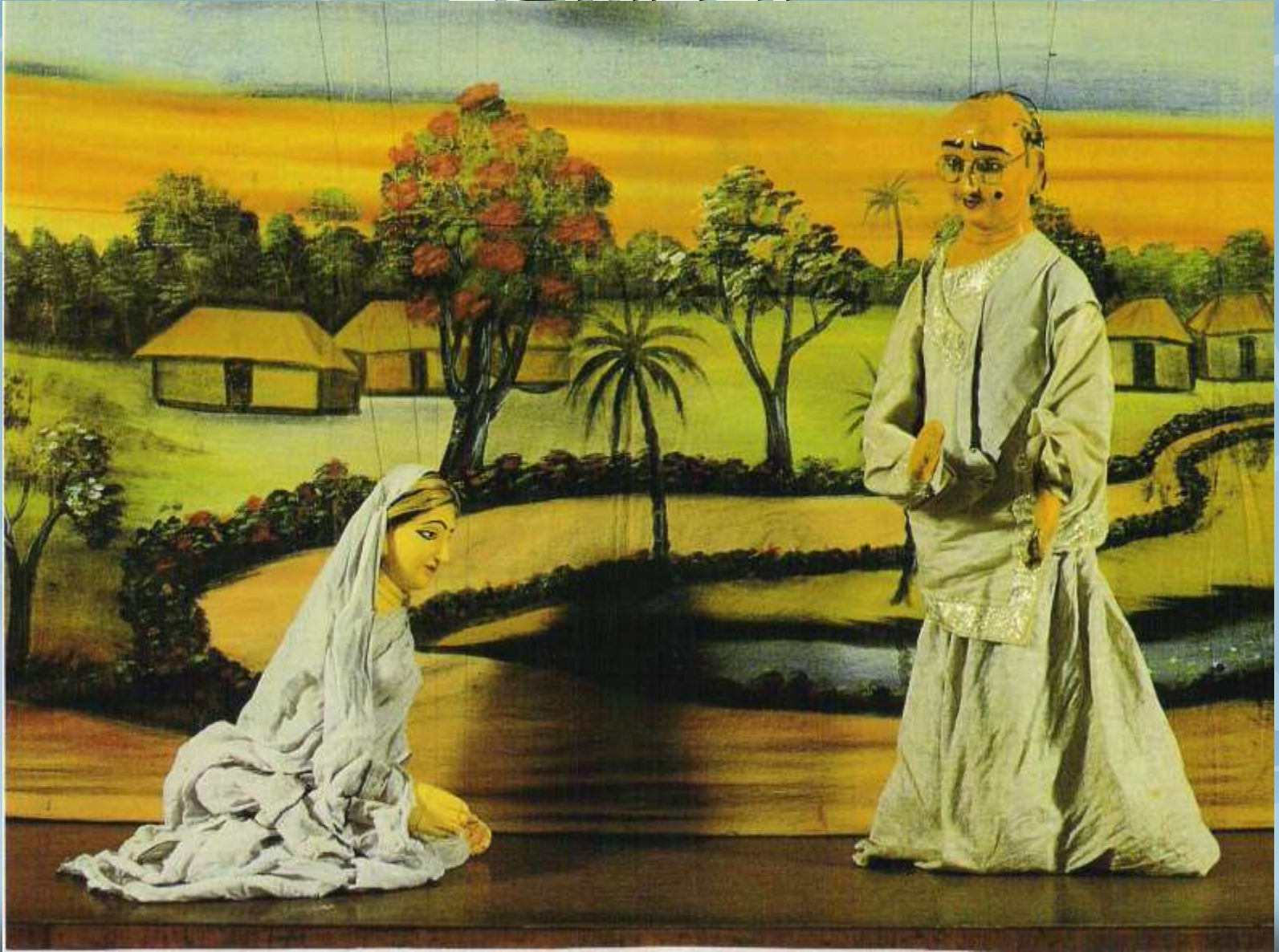
GOPALILA KUNDHEI - ODISHA



MANIPULATION OF PUPPET



TARER PUTUL NACH - W. BENGAL



MANIPULATION OF PUPPETS



PUTULA NACH - ASSAM



PUTUL NACH - TRIPURA



LAITHIBI JAGOI - MANTRID



The background features a light blue gradient with several stylized, overlapping leaf shapes in various shades of blue and purple. The leaves have prominent veins and are arranged in a way that creates a sense of depth and texture.

SHADOW PUPPETS

TOGALU GOMBEATTA - KARNATAKA



COMPOSITE FIGURE



THOL PAVA KOOTHU - KERALA



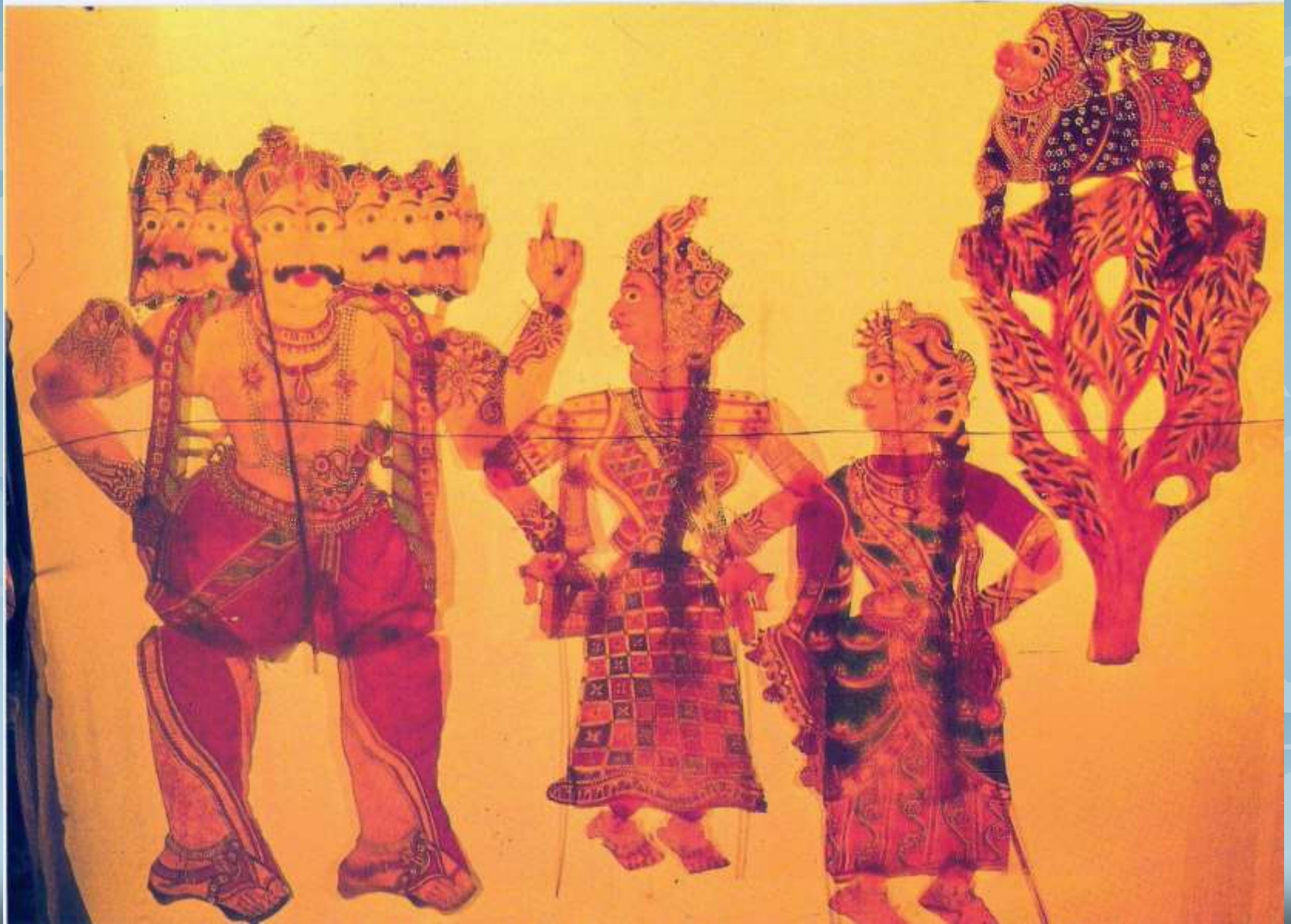
MANIPULATION OF PUPPETS



THOL BOMMALATAM - TAMIL NADU



THOLU BOMMALATA - A.P.



MANIPULATION OF PUPPETS



RAVAN CHHAYA - ODISHA



MANIPULATION OF PUPPETS



The background of the slide features a repeating pattern of stylized, light blue leaves. Each leaf is composed of several pointed lobes radiating from a central vein, creating a complex, organic geometric pattern. The leaves are rendered in a flat, paper-like style with subtle gradients of blue.

COMPOSITE FORMS

CHADAR BADAR - JHARKHAND



BOMMALATTAM - TAMIL NADU

